

**NATIONAL  
COAL MINING  
MUSEUM**

📍 Wakefield, Yorkshire, WF4 4RH  
Open Wednesday—Sunday

# What's On

January—March 2025

**Free  
entry**

Donations  
welcome



**UNEARTH THE  
UNEXPECTED**

Welcome!



# Make memories at the National Coal Mining Museum

**Discover something  
new on every visit, with  
so many places to explore  
inside and out.**

Interactive galleries, authentic historical buildings and spaces, and fascinating objects. Explore how coal was the cornerstone of communities and the backbone of industry.

Chat to our welcoming mine guides, many of whom are former miners, and volunteers to find out more about life down the pit. Enjoy exciting exhibitions including sculpture, art and intricate drawings. You may even spot a comedy legend or two!

For lovers of the great outdoors, we have stunning green spaces where you can take a relaxing stroll or more challenging walk. Surrounded by wonderful wildlife and habitats you will enjoy our brilliant play area, trails, waterfall, bird hides and hidden spots with lots of opportunities to sit and contemplate along the way.

Don't forget to say hello to our ponies, canaries and cat on your travels, who make the Museum their home. Finish off your visit with a browse in the shop, a delicious bite to eat and warming drink in the café. Who can resist one of our famous miners' breakfasts!

Whether it's a day out with the kids or a day of discovery and wonder, we offer the perfect trip out.



# Behind the Scenes at Caphouse Colliery

Wed–Sun from January 2025

📍 Meet at Reception

£5, pre-bookable

Discover the stories and secrets of Caphouse Colliery on an all-new special daily tour with our expert mine guides.

Let them take you on a journey above the surface and behind-the-scenes of Caphouse Colliery, including special places never normally seen by visitors.

Highlights include the Pithead Baths, a sneaky peek down our drift mine, up into the screens where our coal was processed, and into the Lamp Room where you will get the chance to use a traditional miners' lamp.

New for  
2025





# Exhibitions

## 84/85 – The Longest Year

Until 9 March 2025

📍 Exhibition Space, The Hub

Discover our yearlong exhibition marking the 40th anniversary of the Miners' Strike. This exhibition considers the strike through memories and stories of miners and their families.



## From Coal Queens to Comedy Kings: The Sculptures of Graham Ibbeson

11 Jan – 7 Sep 2025

📍 Sitewide Trail

This captivating sculpture trail leads you around our beautiful inside and outside spaces, introducing memorable moments of mining history and much-loved performers.

Figures include Coal Widow, part of the Oaks Disaster Memorial, on loan from the NUM as well as celebrated performers such as Eric Morecambe, Laurel & Hardy and Ken Dodd.

Get involved during your visit by striking the famous poses of the characters and tagging the Museum's social media pages using [#CoalQueensComedyKings](#).



Credit: Max Ibbeson



Credit: Louise Ann Wright

## Sustainable Colour: The Art of Ochre with Louise Ann Wright

**Sat 8 Mar: 11am–1pm**

📍 Meet at Reception

**Free, drop-in event**

Artist Louise Ann Wright has been exploring the use of by-products from the Mine Water Treatment Plant to create ochre pigment as part of her Fine Art MA at Falmouth University.

Meet our volunteers, wander the orange lagoons and learn about the vital and fascinating role they play in the coal mining process. Then join Louise at the Pony Discovery Centre as she demonstrates how she crafts samples and sketches from this remarkable resource.

## Winding Down: Dismantling Coventry Colliery Winding Engine by Arthur Lockwood

**Until 27 April 2025**

📍 Project Space, The Hub

Eleven drawings from a series by industrial landscape artist Arthur Lockwood (1934 – 2019) in the NCMME collection. They depict the dismantling of winding engines at Coventry Colliery as they were removed in 1997. These skilful drawings are on display at a pivotal moment in the history of Caphouse Colliery as we replace our own winding engine.

## In Loving Memory of Work

**Sat 11 Jan – Sun 30 Mar 2025**

📍 Film Booth, The Hub

**Free, drop-in during museum opening times**

Two short films from designer and author Craig Oldham.

### In Loving Memory Of Work: Sacred Ground (2024)

To mark the 40th anniversary of the Miners' Strike, Craig Oldham collaborated with actor Maxine Peake, and musician Keeley Forsyth, to create a poignant and powerful short film using footage provided by former UK miners.

### In Loving Memory Of Work: Living Coal (2015)

To mark the publication of the influential book, *In Loving Memory Of Work*, this film documents the process and reminds us how central coal used to be in our lives and communities.



# Talks and Tours

## Discover our History



### Steam Winder Demonstrations

Weekends and school holidays: Demos throughout the day  
📍 Steam Winding House, Caphouse  
**Free, just turn up**

See how a few puffs of steam can work with some giant machinery to move the mighty Pit Wheel.



Steam Winder Demonstration

### Wellbeing Wander

Thu 30 Jan, Thu 27 Feb & Thu 27 Mar: 11am–12pm  
📍 Meet in The Hub  
**£1.50, pre-bookable**

See the seasons change, try something new and socialise, on a short relaxed walk of our Nature Trail.

### Railways of Caphouse Tour

Wednesdays: 1pm  
📍 Meet at Pit Yard  
**Free, just turn up**

Get ready to unearth the secrets of our coal's incredible journey, and discover the mighty locomotives and wagons that carried it.

### Heritage Walk

Thu 16 Jan, Thu 20 Feb & Thu 20 Mar: 10am – 12pm  
📍 Meet at Reception  
**Free, pre-bookable**

Enjoy a country walk? Fascinated by local heritage? Join us for a circular walk around the Museum and discover shadows of industry.



Heritage Walk

### Pithead Baths Explore

Wed–Sun: 11am–11.45am & 1pm–1.45pm  
📍 Meet at Pithead Baths  
**Free, just turn up**

Find out more about the lives, interests and lifestyles of miners on this fun family friendly tour.



Pit Head Baths Explore

### Accessible Overground Tour

Thursdays: 1pm–2pm  
📍 Meet at Reception  
**Free, must be pre-booked\***

Join our friendly Volunteers on an accessible tour of the museum. Visitors will be guided around site on our wheelchair accessible buggy and learn all about our mining heritage.

**\*Please note the buggy can only hold one wheelchair and 5 seated.**

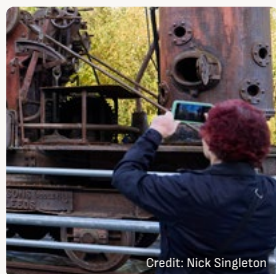


## Captured History: Photography Walk

Fri 10 Jan, Fri 14 Feb &  
Fri 14 Mar: 11am–12pm

📍 Meet at Reception  
**£1.50, pre-bookable**

Whether you're a seasoned photographer or a curious beginner, bring along your camera or smart phone and join our guided photography walk, led by Photography Volunteer Roy, and discover the amazing spaces of the Museum.



Photography Walk

Credit: Nick Singleton

## The People Who Made Caphouse Tour

Thu 2 Jan, Thu 6 Feb  
& Thu 6 Mar: 10am

📍 Caphouse Colliery  
& Hope Pit  
**Free, pre-bookable**

Discover more about the lives of the inventors and innovators that made Caphouse Colliery and Hope Pit.



## Hope Pit Explore

Sundays from 19 January  
(Volunteer dependent):  
12.30am–2pm

📍 Meet at Sandpit  
**Free, pre-bookable**

Join our Volunteers and explore the buildings of Hope Pit. Discover more about our unique collection of restored colliery buildings and learn about the innovations above ground that supported underground mining.

## Pit Poetry Walk

Wed 8 Jan, Wed 5 Feb &  
Wed 5 March: 11am–12pm

📍 Meet at Reception  
**Free, pre-bookable**

Discover the history of the Museum and the mining industry through poems and stories led by our Volunteers.

## International Women's Day

Sat 8 Mar: 10.30am–1.30pm  
**Pre-bookable**

Save the date for our International Women's Day event, hear from inspiring speakers and so much more.

## Meet the Curator – Spotlight talks

Thursdays from 9 Jan  
📍 Meet in the Gallery  
**Free, pre-bookable**

Join us for a series of spotlight talks in the Gallery. Take a closer look at some of our stunning collections and find out more about how we care for them.

## Why's Our Water Orange?

Last Saturday  
of the Month: 1.30pm  
(Volunteer dependent)  
📍 Meet at Reception  
**Free, just turn up**

Discover how we pump and purify orange mine water, through our innovative water treatment system.



Credit: Anton Want / NCMME 2012

# Get Creative!



**FEEL GOOD  
FRIDAYS**

**Adults**

Are you a creative person? Do you enjoy trying new things? Join us for an uplifting afternoon of craft and creative skills. No previous experience needed.

**1.30pm–3pm**

**📍 Learning Space, The Hub**

**£7 (carers free), pre-bookable**

- |                   |                                     |
|-------------------|-------------------------------------|
| <b>Fri 10 Jan</b> | <b>Paper – Multi-media Printing</b> |
| <b>Fri 24 Jan</b> | <b>3D – Candle Making</b>           |
| <b>Fri 31 Jan</b> | <b>Art – Paper Marbling</b>         |
| <b>Fri 7 Feb</b>  | <b>Textiles – Fabric</b>            |
|                   | <b>Feather Wall Hanging</b>         |
| <b>Fri 7 Mar</b>  | <b>Clay – Polymer Clay Charms</b>   |
| <b>Fri 21 Mar</b> | <b>Textiles –</b>                   |
|                   | <b>Macrame Rainbows</b>             |
| <b>Fri 28 Mar</b> | <b>3D – Metal Miner Checks</b>      |



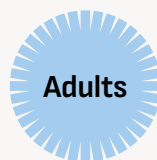
## Schools

Our Museum creates powerful, meaningful and memorable learning experiences that last. Our full days of led and self-led activities enable children's imaginations to run free.

**Discover more about our amazing school workshops and learning resources here**  
**[ncm.org.uk/learning](https://ncm.org.uk/learning) or scan the QR code**







Be inspired by our stunning art collection  
at our exciting art workshops.

**10.30am–12.30pm**

📍 Education Room, The Hub

**£12, pre-bookable**

**Sun 12 Jan**

**Appliqué with Ali Taylor**

Explore textile appliqué to learn fabric layering, intricate stitching, and embroidery techniques to create textured pieces that showcase your creativity.

**Sun 9 Feb**

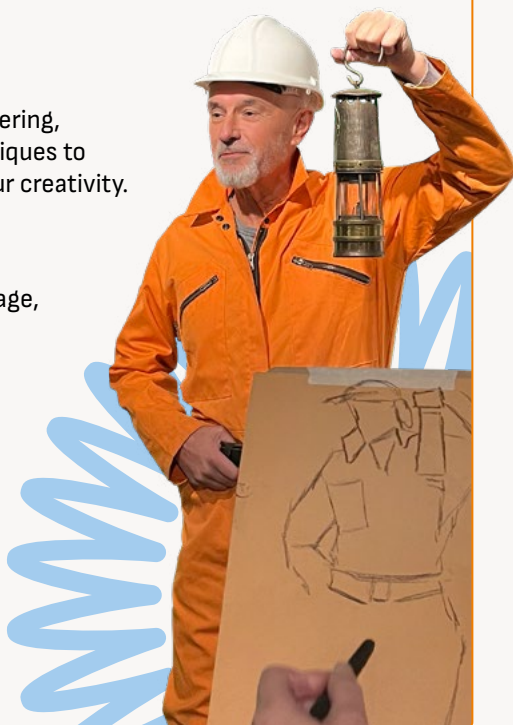
**Mixed Media Sculpture with Lee Graham**

Craft a mixed media sculpture of a pit village, using recycled components, blending various materials and textures whilst experimenting with new techniques.

**Sun 9 Mar**

**Wire Sculpture with Harry Malkin**

Experiment with the techniques of sculpting with wire in the hands-on, practical workshop. Follow Harry as he demonstrates the step-by-step techniques to make a striking mining figure.



## Photography Workshop

**Thu 9 Jan & Thu 23 Jan: 6pm–8pm £15, pre-bookable**

Join professional photographer John Arnison for a nighttime photography workshop where you'll master the art of long exposure and slow shutter speed techniques. Under his expert guidance, you'll learn to creatively paint a picturesque landscape with light, capturing unique and striking images in the process.

# Family Fun!

**February  
Half Term**

**15–23 Feb Closed**  
Mon & Tue

Discover how nature has reclaimed our mining landscape. Come and have a go at hands-on exploration with our new nature backpacks, take part in an interactive science workshop, discover the legends that linked mining communities with the natural world. Plus get hands-on with nature-inspired activities in our Makers' Shed.



## Roots, Shoots, Buzzes and Hoots

**All ages**

Especially suited to **Under 5s**

**Wed 19 Feb & Fri 21 Feb:**  
**11am to 3pm**

📍 Ask at Reception for  
timings and location

**Free, just turn up**

What's growing here in our outdoor spaces? Come and join in with stories of the plants and creatures that live in and around the museum.

## Meet the Trees (Guided Walk)

**5 years and over**

**Wed 19 Feb:**  
**11am–12.30pm**

📍 Meet outside The Hub

**Free, just turn up**

Join us for a relaxed guided walk through our Nature Trail. Discover different trees and get hands-on with nature. Moderate walk with some steep inclines.

## Canary Capers Puppet Show

**Wed–Sun:**

**11.30am–3pm**

📍 Pony Discovery  
Centre

**Free, just turn up**

Join Sparky the canary as he meets lively trees that share their unique stories and roles in coal mining. This enchanting shadow puppet show brings nature and history together in a magical woodland adventure for all ages!



## Makers' Shed

Wed 19 – Sun 23 Feb:

11.30am–3.30pm

📍 Learning Space, The Hub

**Free, just turn up**

Reclaimed by nature– come and get creative with crafts inspired by our new nature backpacks! After, why not pick up a back pack from Reception and explore our nature trail.

## Guided Nature Tour



Wed 19 Feb & Fri 21 Feb

📍 Meet outside The Hub

**£2.50 per family,  
pre-bookable**

Join us on a guided investigation of the nature trail, using scientific equipment from our new Nature Explorer Bags— perfect for curious minds eager to uncover the wonders of the natural world!

**Mini Beast Wed: 11.30am**

**Bird Spotting Wed: 2pm**

**Pond-Dipping Fri: 11.30am**

**Tree Trail Fri: 2pm**



Funded by  
UK Government

## Little Wildlings: Scavenger Hunt

**All ages**

**Especially suited to Under 5s**

Fri 21 Feb:

10.30am–11.30am

📍 Meet outside The Hub

**Free, just turn up**

Join us for a woodland adventure hunting for nature's treasures.

## Horsekeeper Talk

Wed–Sun:

12pm & 2.30pm

📍 Pony Discovery  
Centre

**Free, just turn up**

Hear all about our four-legged friends in the 12pm talk and see them being fed at 2.30pm.



## Spectacular Science

**7–12 years**

**Younger siblings welcome**

Thu 20 Feb: 11.30am,

1.30pm & 2.30pm

📍 The Hub

**£10 per family  
(up to 3 children),  
pre-bookable**

Join Amazelab for a fun and interactive science workshop to discover how mine water is cleaned naturally by our reed beds. Use natural materials to create your own fabulous filter to take home.

## The Dirt in My Fingernails

**7–12 years**

**Younger siblings welcome**

Thu 20 Feb:

10.30am, 1pm & 2pm

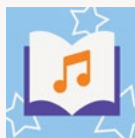
📍 Meet at Reception

**£2.50 per child,  
pre-bookable**

Join Storytrails for an interactive storytelling performance exploring the strong bonds between mining communities and the natural world around them.

Some activities may not run everyday, please check at Reception. All information correct at time of printing.





**UNDER  
5s**

## Wacky Wednesdays

**Wednesdays: 10.15am–11am**

📍 Learning Space, The Hub

**£2.50, pre-bookable**

**Play and learn with your pre-schoolers!**

Join us as we explore one of our fun weekly themes through interactive storytelling, activities, singing and crafts.

Wed 8 Jan	Time Keeping
Wed 15 Jan	Keeping Warm
Wed 22 Jan	Keeping cosy at home
Wed 29 Jan	Bathtime!
Wed 5 Feb	Our Library (National Storytelling Week)
Wed 12 Feb	Snap, Crackle & Pop! (Miners' snap tins)
Wed 26 Feb	Pithead Baths: Keeping Clean
Wed 5 Mar	Big Machines
Wed 12 Mar	Science Special 'Adapt and Change'*

*\*Please note this event is £5*

Wed 19 Mar Trains and Tracks

Wed 26 Mar Mining Mothers

## Stay and Play

**Fridays (term-time): 10am–11.30am**

📍 Hope Conference Room, The Hub

**£1.50 per child, pre-bookable**

**Stay and play with your pre-schoolers!**

Join us for our weekly 'Stay and Play' session for under 5s. The perfect opportunity to play for your little ones, including dressing up, sensory tuff trays, a sensory dark tent, story corner, musical instruments and crafts.







# CAPHOUSE CREATORS

7–12  
years

Calling all 7–12 year olds! Get creative at our hands-on monthly club, working with different materials to learn new skills.

**11am–12.30pm & 2pm–3.30pm**

📍 Learning Space, The Hub

£7, pre-bookable

## **Pom Pom Garlands** **Sun 5 Jan**

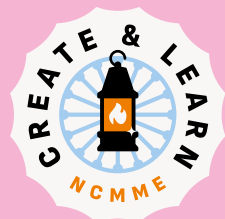
Join our workshop inspired by mining homes, where we'll create colourful pom-pom garlands to add warmth and cheer to any space!

## **Stained Glass Style** **Sun 2 Feb**

Discover the timeless beauty of stained glass in our hands-on workshop, where you'll create a unique light-up art piece inspired by traditional lead work techniques.

## **Screen Printing** **Sun 2 Mar**

Unleash your creativity in our screen printing workshop, where you'll create your own unique emblem for a tote bag, inspired by the screen-printed emblems in our museum collection.





# STEAM CLUB

11–16  
years

Calling all 11–16 year olds! Join us for our hands-on monthly STEAM Club and enjoy a creative twist on your STEM subjects using different materials to learn new skills.

**11am–12.30pm & 2pm–3.30pm**

📍 Learning Space, The Hub

**£7, pre-bookable**

## Exciting energy – the wonders of wind turbines

**Sun 19 Jan**

Explore renewable and non-renewable energies, whilst putting your creative skills to the test to build a working wind turbine.

## First Aid Underground

**Sun 16 Feb**

Discover the vital role of the pit nurse in this workshop. Identify and treat infections by creating your own antibacterial ointment and master essential first aid skills.

## Get to Know Gases

**Sun 16 Mar**

Explore why gas testing is crucial in underground environments and learn about the methods used for gas testing. You'll use scientific equipment to detect and identify various gases, ensuring safety in confined spaces.





# HOME EDUCATORS

7–13  
years

Home Educators are always welcome here at the museum. Every month you can get a deeper understanding of the Museum with our specially tailored workshops.

## Workshops:

11am–12.30pm & 2pm–3.30pm

📍 Education Room, The Hub

£7, pre-bookable

### History and Science

Wed 15, Thu 16 & Fri 17 Jan

Meet a Mine Guide and explore an interactive 3D model of Caphouse Colliery. Handle objects and ask questions to find out how mining has changed over the last 100 years.

### Art and History

Wed 12, Thu 13 & Fri 14 Feb

Join Uncle Fred or Auntie Brenda in the mining pit village for stories of resilience and solidarity as we remember the 1926 Miners' Strike. Then, get creative and craft your own striking shrinky badge to make a statement of your own!

### Science Week

Wed 12, Thu 13 & Fri 14 Mar

Explore the fascinating concepts of potential and kinetic energy by inventing a gravity-defying marble run! Learn science principles and the fundamentals of physics, and watch as your marbles twist and turn in a thrilling, physics-defying adventure.



# Coming Soon...

## From the Earth Comes Light:

### Women, Creativity, and Mining in 20th Century Britain

Fri 4 Apr – Sun 28 Sep 2025

Discover the untold stories of women in twentieth-century British mining through the eyes of Guest Curator Jennifer Jasmine White. This groundbreaking exhibition at NCMME showcases artworks that highlight women's significant roles and contributions to mining, as narrated by the women themselves. For the first time, their artistic impact on mining's cultural history is celebrated, offering fresh and essential perspectives that resonate today. Don't miss this unique opportunity to explore the vital connections between women and mining.

## Geology Rocks!

Saturday 26 April 2025

Free

Uncover and explore incredible rocks and fossils as you dig into the fascinating world of geology. Enjoy immersive shows, guided tours, and embark on a journey to discover the hidden wonders beneath your feet.

Event organised in partnership with Yorkshire Geological Society.



Scan here to see  
what's on, or  
visit [ncm.org.uk](https://ncm.org.uk)



# Be part of our story **and** **volunteer with us**

Find out more about flexible volunteering opportunities that work for you. Dedicated support, training and social events.

Find out more here  
[ncm.org.uk/joinus/volunteering](http://ncm.org.uk/joinus/volunteering)



## Drop into the Shop

No visit is complete  
without a visit to the  
Museum Shop.

Find the perfect gift for your  
loved one or treat yourself  
to a selection of quality gifts,  
books, and art.

Pop in the shop to  
discover original art works  
and prints from artist  
Kevan Thompson until  
January and works from  
Ellie Way and Aron  
Hurst-Wilson opening  
in February.



# Lives lived, lives lost

## Lives Remembered

### Take your place in history

Our Miners' Memorial Garden celebrates and commemorates the courage and camaraderie of miners, and the close-knit families and communities that supported them. A place for quiet contemplation and reflection, the Garden allows all who visit us to share memories of what coal mining has meant to them over many generations.

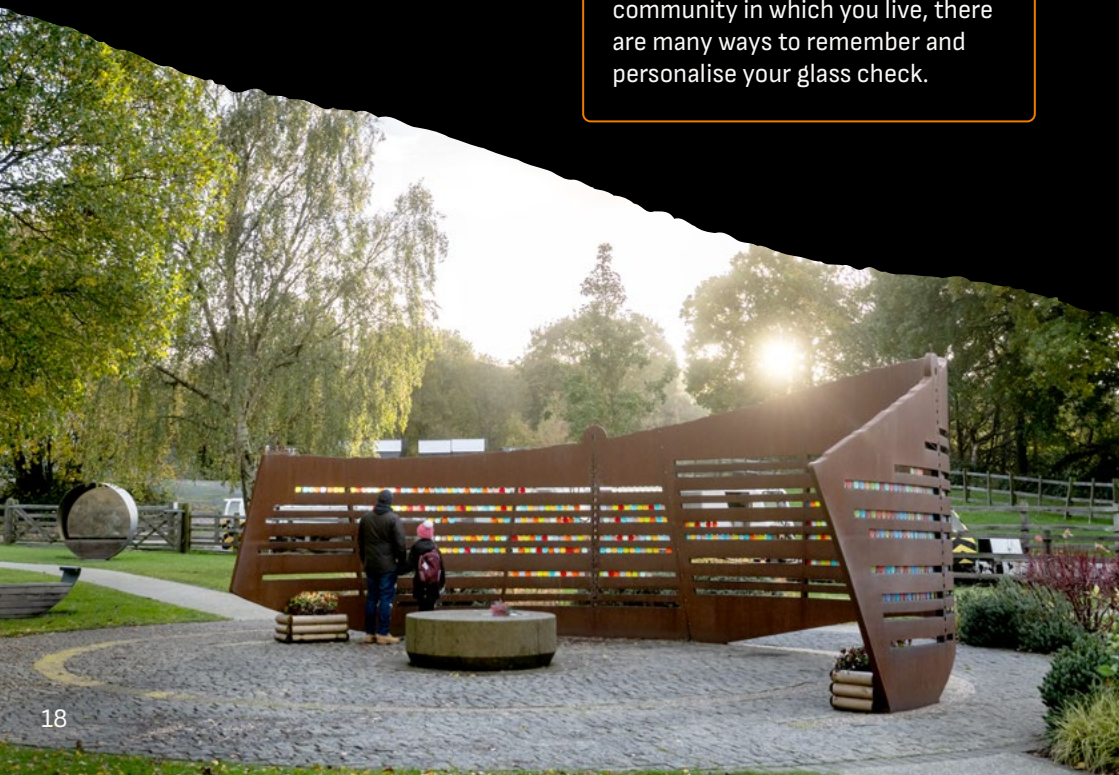
To find out more, visit  
[ncm.org.uk/garden](http://ncm.org.uk/garden)



### Remember your loved ones

Each beautifully handcrafted check costs **£75** and creates a unique and lasting memory for years to come.

Whether you wish to remember a loved one, or share a memory of the community in which you live, there are many ways to remember and personalise your glass check.



# Make a difference...

## Dig Deep and Donate

We are a charity and every penny counts.

Your donation, however large or small, is vital to us and is used to share the history of mining for everyone to learn about and enjoy.

Donate today via [ncm.org.uk/donate](https://ncm.org.uk/donate)



## Adopt a Pony Today

**For just £30 a year,  
you could make a real  
difference to them.**

Our ponies and Clydesdale help to honour the memories of the pit ponies that once lived and worked in mines across England's coalfields. Help us keep their story alive by adopting a pony today.

In return for your support, you will receive a certificate, cuddly toy and pony updates.

Adopt today via  
[ncm.org.uk/ponies](https://ncm.org.uk/ponies)

Could  
you help  
care for our  
ponies?





# Travel through time in a new immersive digital experience

New for  
2025

## Are you ready to travel through time?

Our brand new immersive Time Tunnel  
experience opens in January 2025.

Be transported through the decades as you are  
taken through almost 200 years of mining  
history thanks to state-of-the-art technology.

Led by a former miner you will encounter digital  
characters of the past through exciting films,  
touch treasures of times gone by and be greeted  
by authentic sights and sounds, all culminating  
with an unforgettable special effects finale.

This exciting, new, accessible experience is a  
permanent addition to the museum. It will also  
provide an exciting alternative to our famous  
Underground Tour which will close temporarily  
from January until March 2025 while a new  
electric winder is installed.

**See website and social media pages for details**



Scan here to plan  
your visit, or go  
to [ncm.org.uk](https://ncm.org.uk)



All information in this booklet was correct at time of printing.  
National Coal Mining Museum reserves the right to change any  
details, prices, terms and conditions where necessary.

Registered in England & Wales as a Limited Company by Guarantee No. 1702426.  
Registered Charity No. 517325.

Printed using FSC materials and Carbon Captured paper.



Share your  
experience  
**#NCMME**

