

NATIONAL COAL MINING MUSEUM

Visual Story



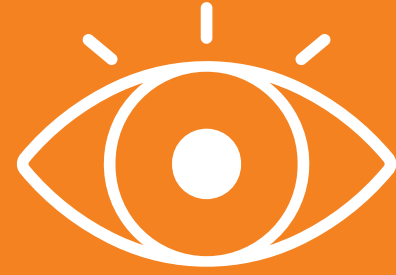
National Coal Mining Museum is an original coal mine situated in 42-acres of beautiful countryside in Wakefield, West Yorkshire.

This means it is a place where I can enjoy history, science, walking along the Nature Trail, eating in the Café and spending time with friends and family on an exciting day out with lots of space to explore.



When I visit the National Coal Mining Museum

Outside I might see:



Industrial Mining Buildings



Paddy Train



Picnic Benches



Trees and Flowers



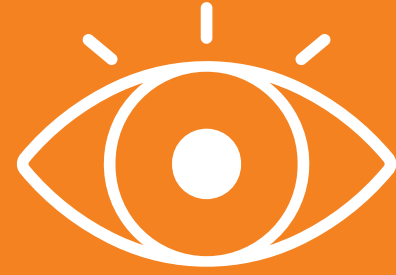
Adventure Playground



Memorial Garden

When I visit the National Coal Mining Museum

Inside I might see:



Staff Welcoming People



Friendly Volunteers



Videos to Sit and Watch



Original Shower Blocks



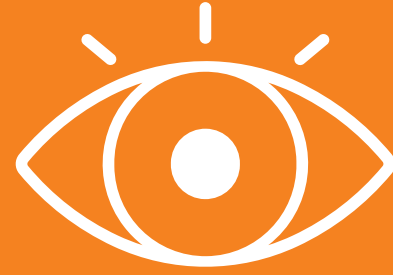
People from History



Galleries and Exhibitions

When I visit the National Coal Mining Museum

Underground I might see:



Friendly Mine Guides



Other Visitors on the Tour



Models of People and Animals



Rocks and Fossils



Roof Supports



Large Machinery

When I visit the National Coal Mining Museum

I might smell:



Sulphur from the
Water Treatment Plant



Oil in the Power House
and Steam Winder



Horse Feed and Hay in the
Pony Discovery Centre



Food and Drink in the Café



Flowers on the Nature Trail



Burning Coal in the
Blacksmiths

When I visit the National Coal Mining Museum

I might hear:



Staff, Volunteers and Visitors



Paddy Train moving along the track and the Horn Honking



Horses Neighing or Cats Meowing in the Pony Discovery Centre



Hammer Hitting the Anvil in the Blacksmiths



Canaries Chirping outside the Underground Tour



Water Flowing over the Weir on the Nature Trail

When I visit the National Coal Mining Museum

I might hear:



Staff, Volunteers and Visitors



Video and Sound Recordings



Horses Neighing or Cats Meowing
in the Pony Discovery Centre



Hammer Hitting the Anvil
in the Blacksmiths



Canaries Chirping outside
the Underground Tour



Water Flowing over the
Weir on the Nature Trail

When I visit the National Coal Mining Museum

I might touch or feel:



Helmets and Cap Lamps on the Underground Tour



Mining Objects and Artefacts



A Metal Miners Check



Lumps of Coal



Horses in the Pony Discovery Centre



Activities in the Exhibitions and Galleries

When I visit the National Coal Mining Museum

I might taste:



Hot or Cold Food in the Café



Hot or Cold Drinks in the Café



Cakes, Biscuits or Buns
in the Café



Biscuits and Cakes in the Shop



Traditional Sweets in the Shop



Ice Cream and Ice Lollies
in the Shop and Café

Most of all, National Coal Mining Museum is a place where I can learn about coal mining history, relax and explore in a safe environment with my friends and family.

